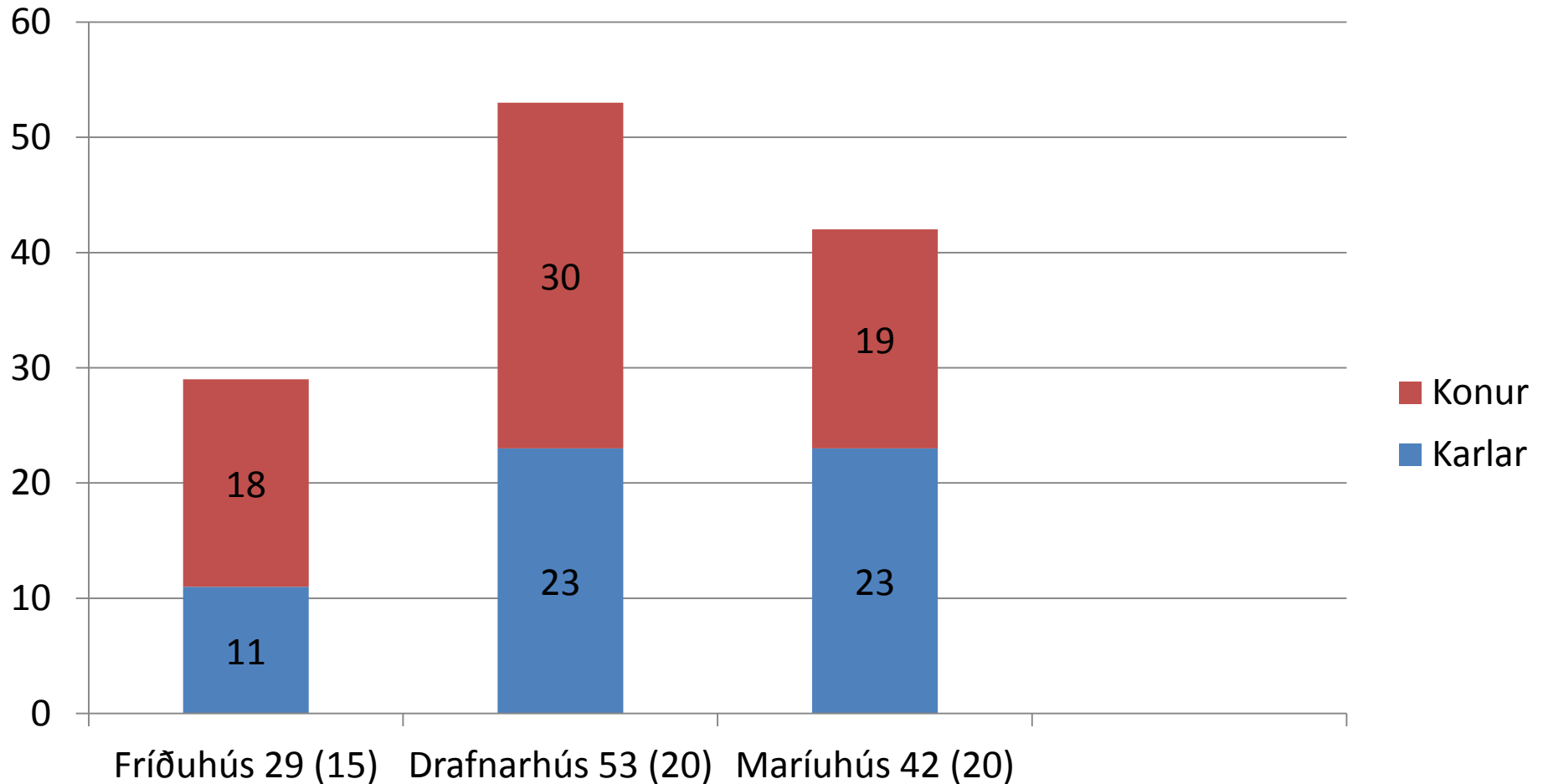


Árið 2013 - lykiltölur

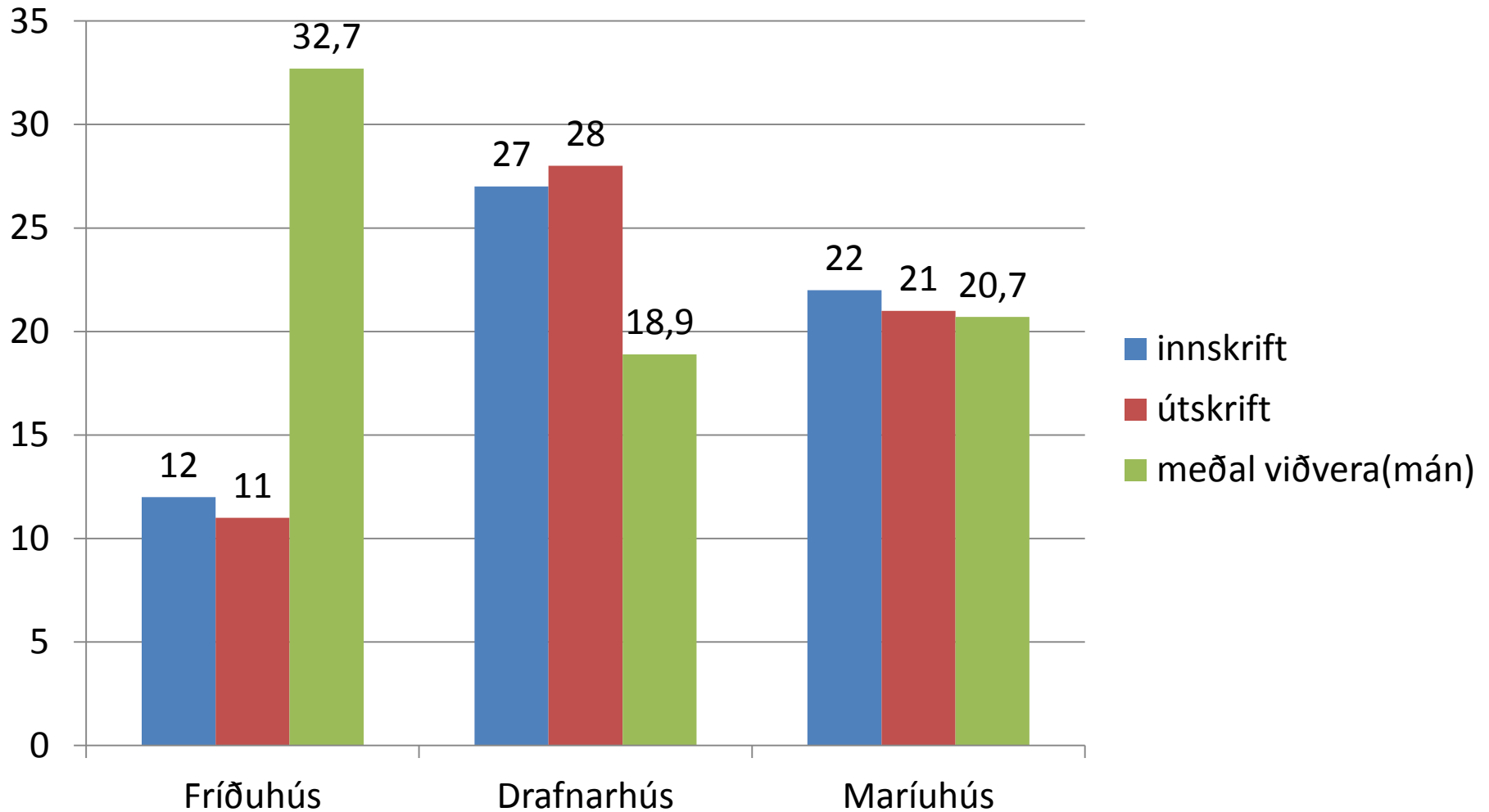
Fríðuhús, Drafnarhús og Maríuhús

Dagþjálfanir FAAS

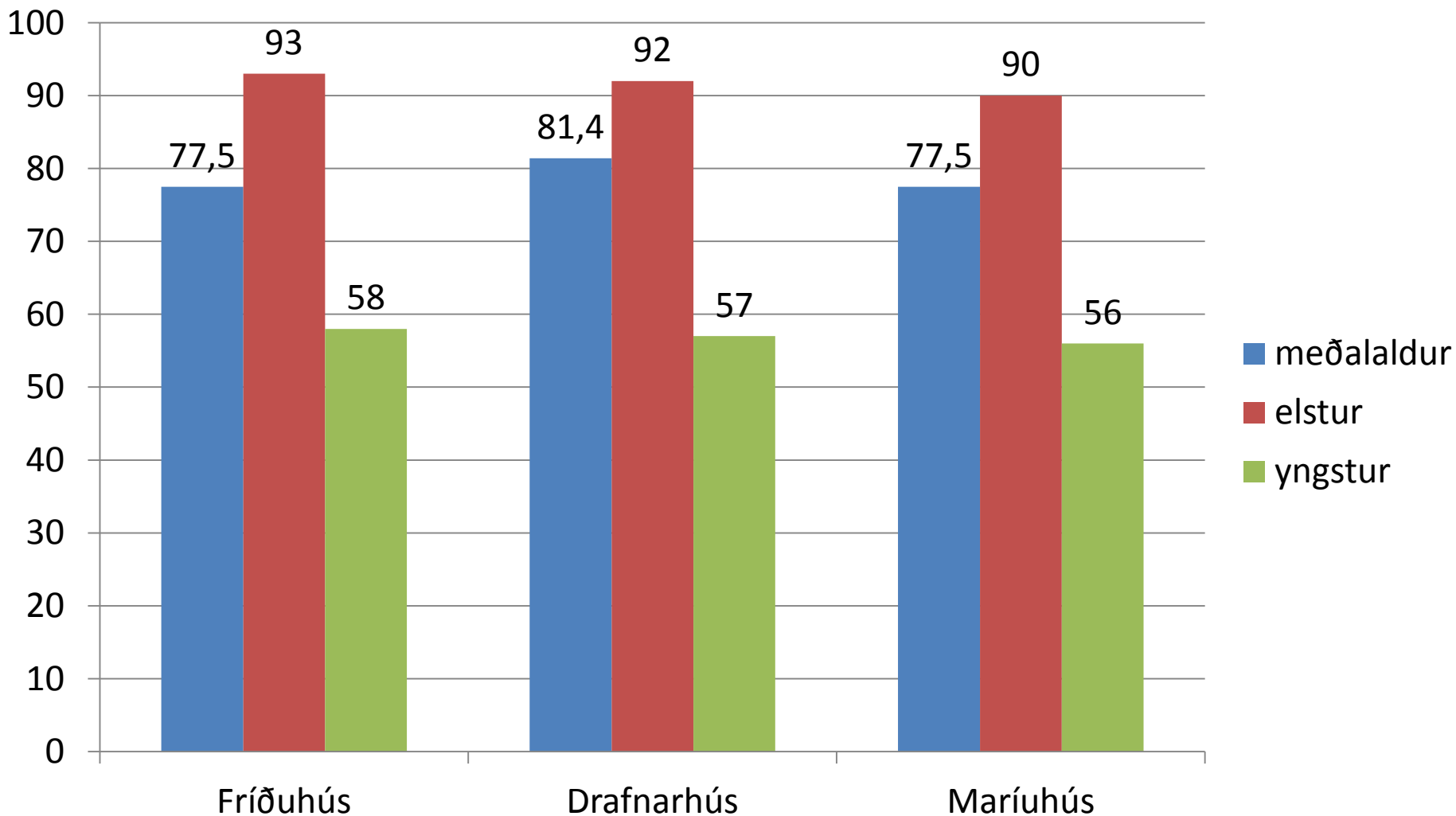
# Fjöldi einstaklinga sem nýttu sér dagþjálfun hjá FAAS 2013



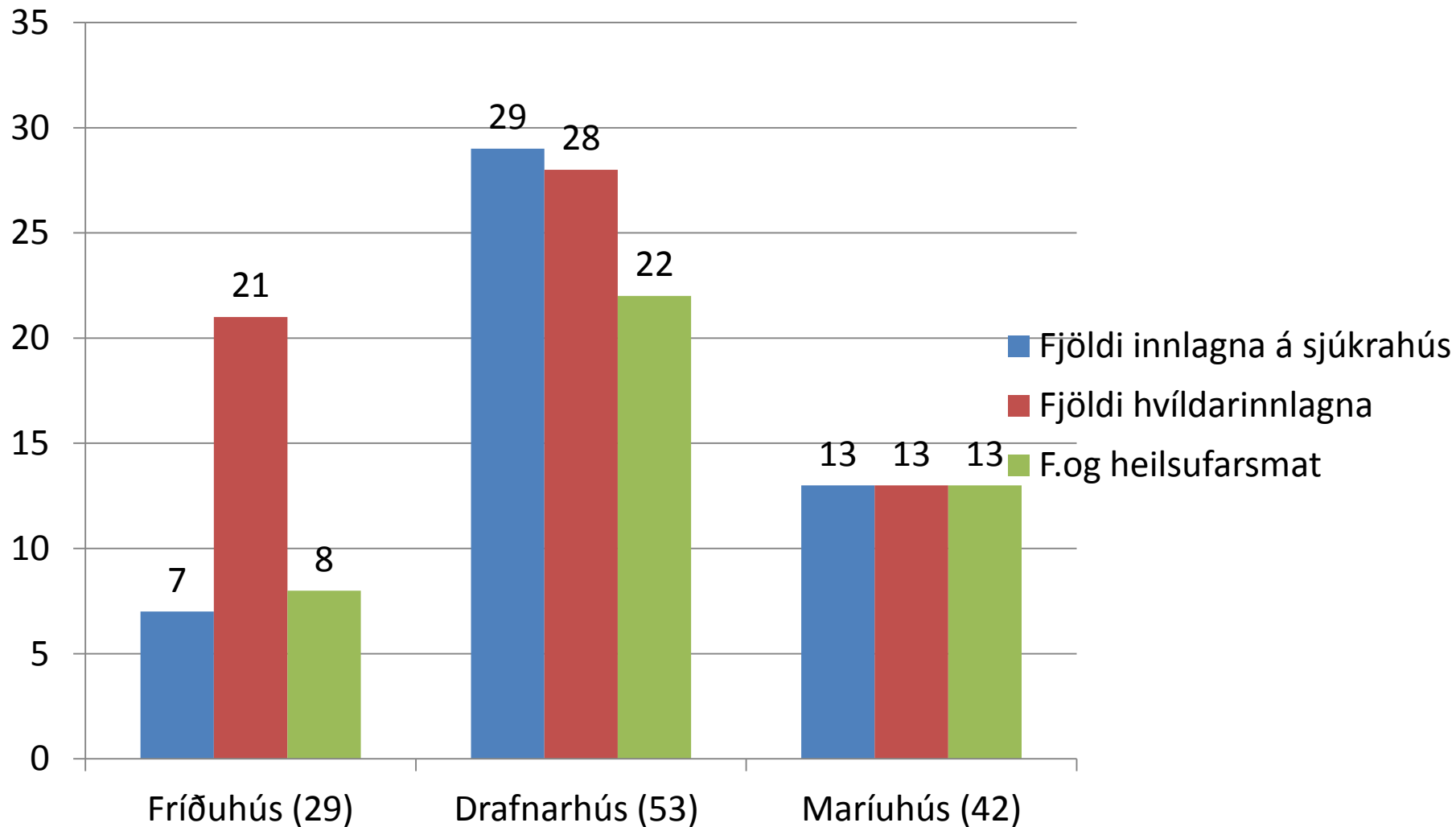
# Innskrift, útskrift og meðal viðverutími í húsunum 2013



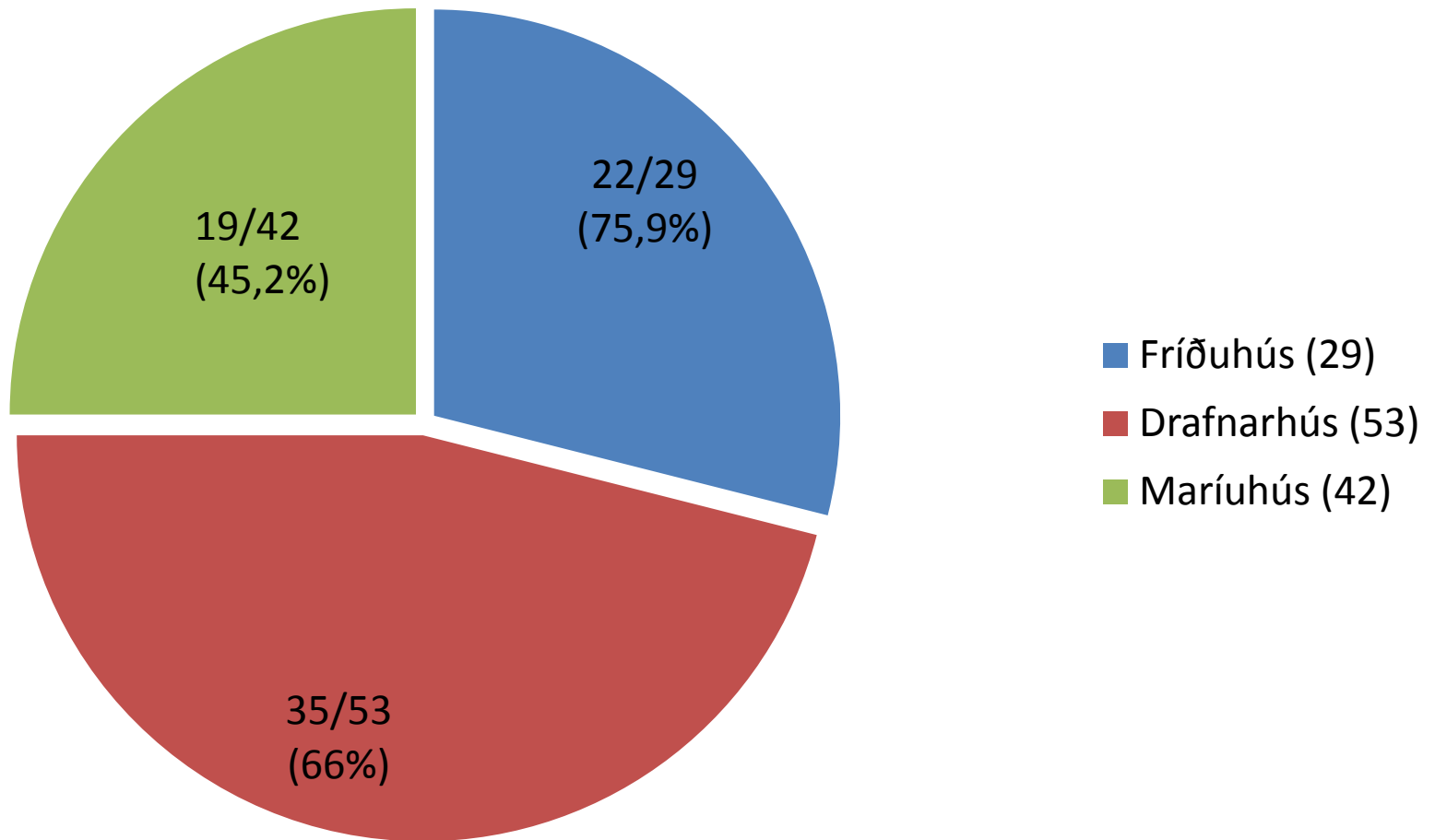
# Meðalaldur þeirra sem nutu þjónustu húsanna 2013



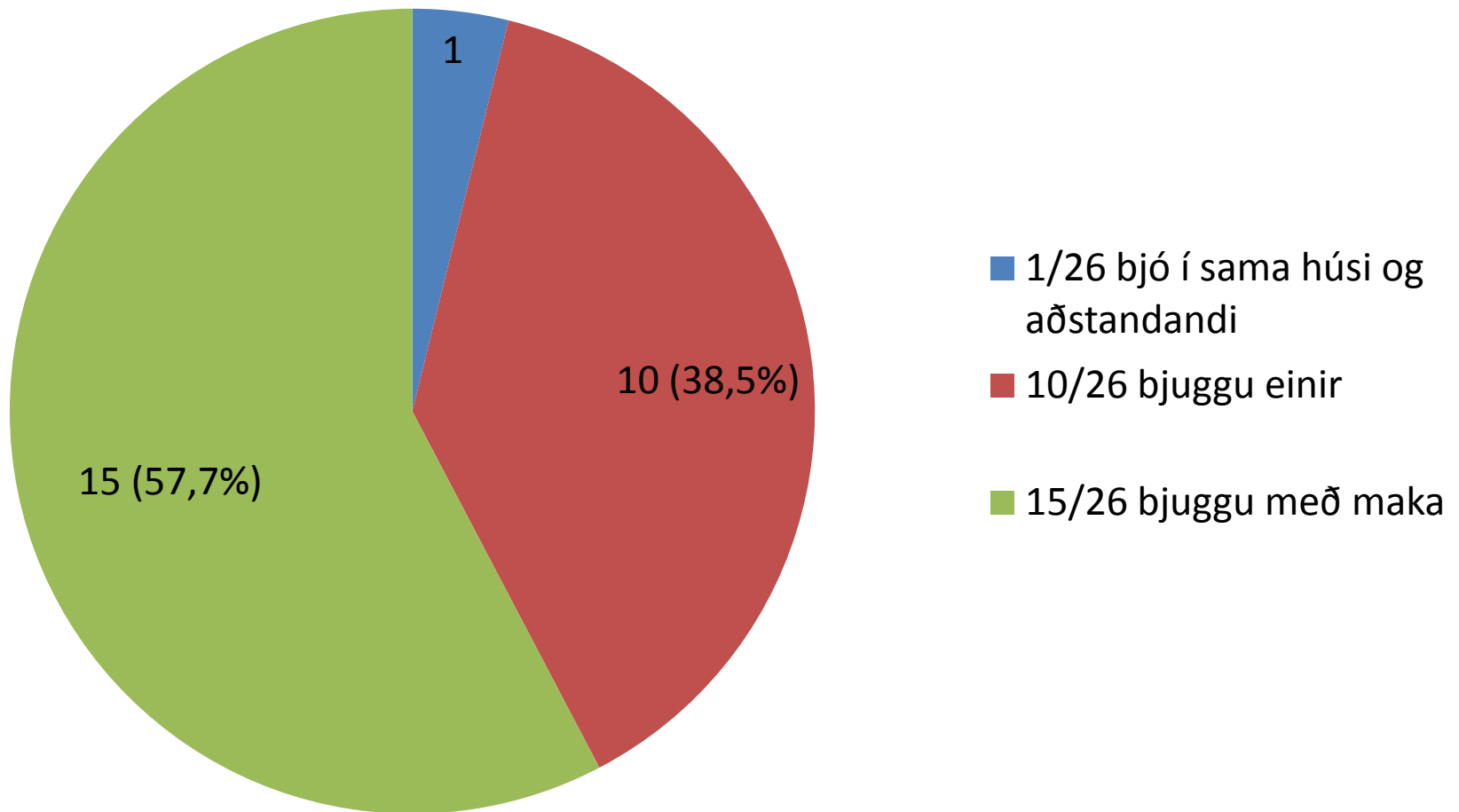
# Innlagnir, færni- og heilsufarsmat 2013



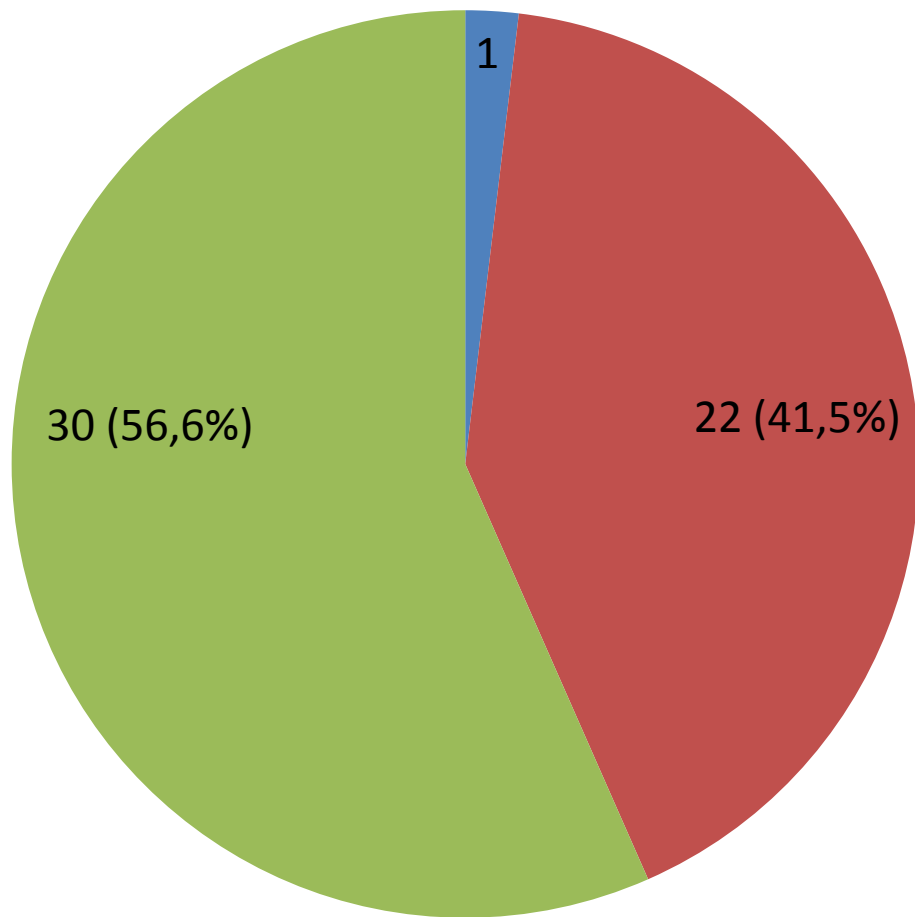
# Fjöldi sem fékk heimaþjónustu 2013



# Búseta skjólstæðinga Fríðuhúss 2013



# Búseta skjólstæðinga Drafnarhúss 2013



- 1/53 bjó í sama húsi og aðstandandi
- 22/53 bjuggu einir
- 30/53 bjuggu með maka



# Búseta skjólstæðinga Maríuhúss 2013

