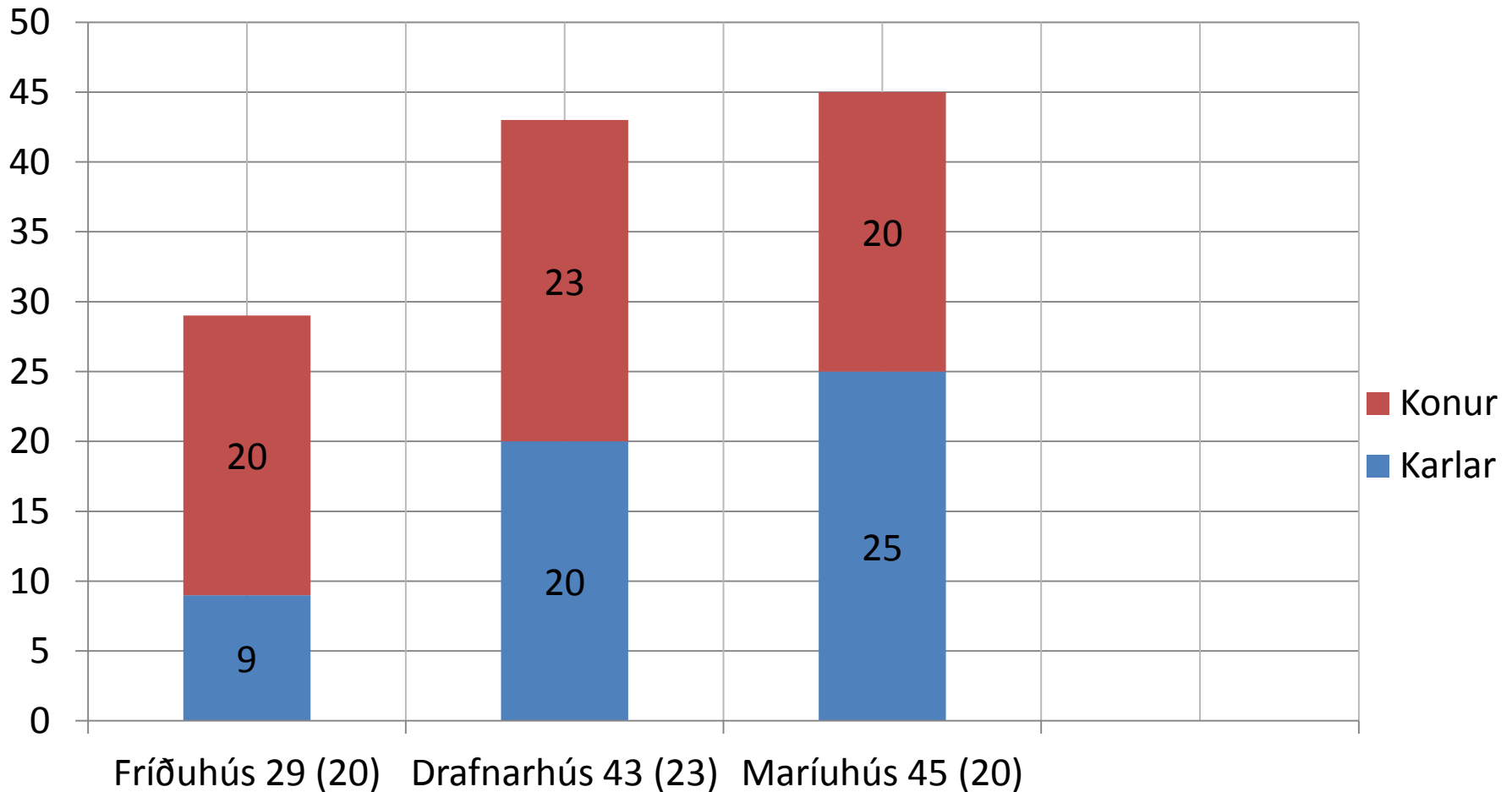


Árið 2014 - lykiltölur

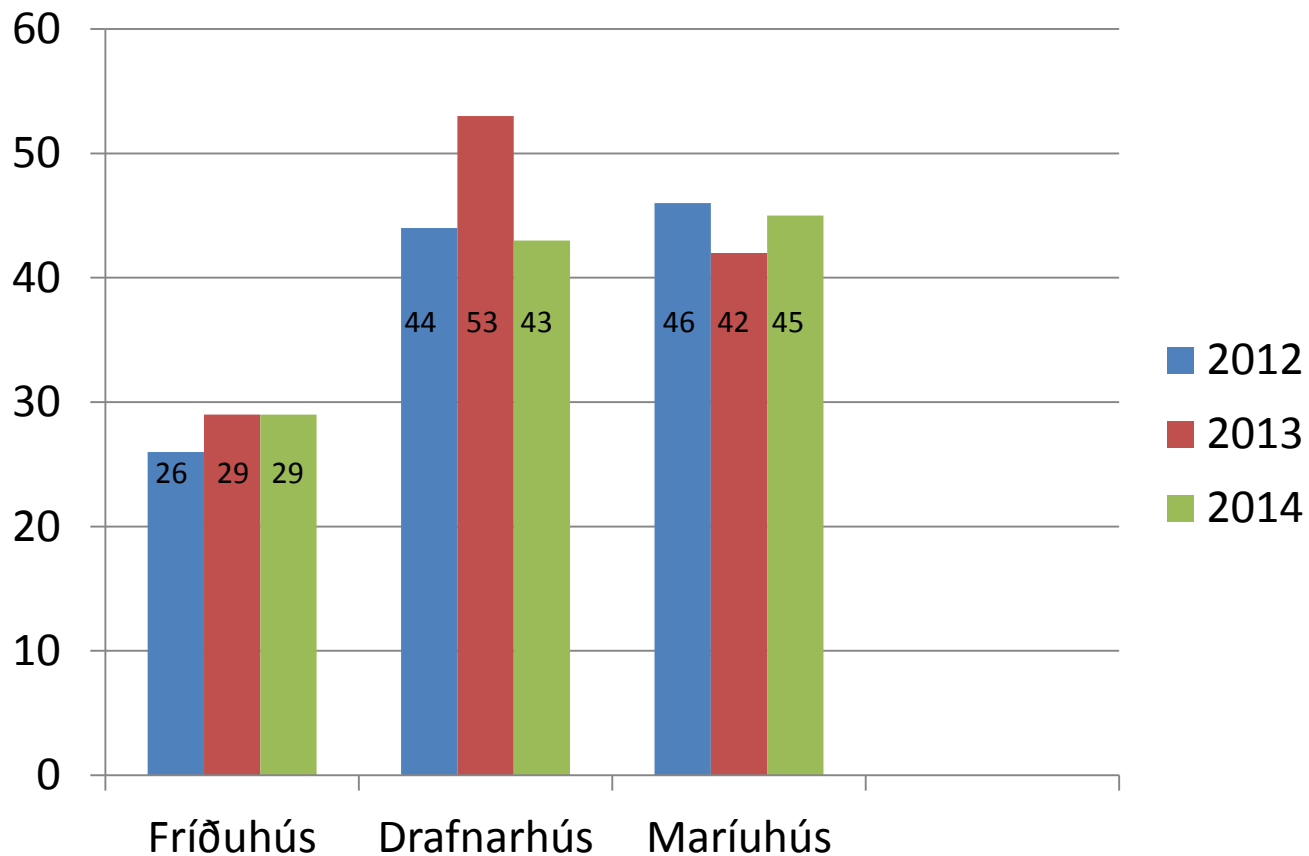
Fríðuhús, Drafnarhús og Maríuhús

Dagþjálfanir FAAS

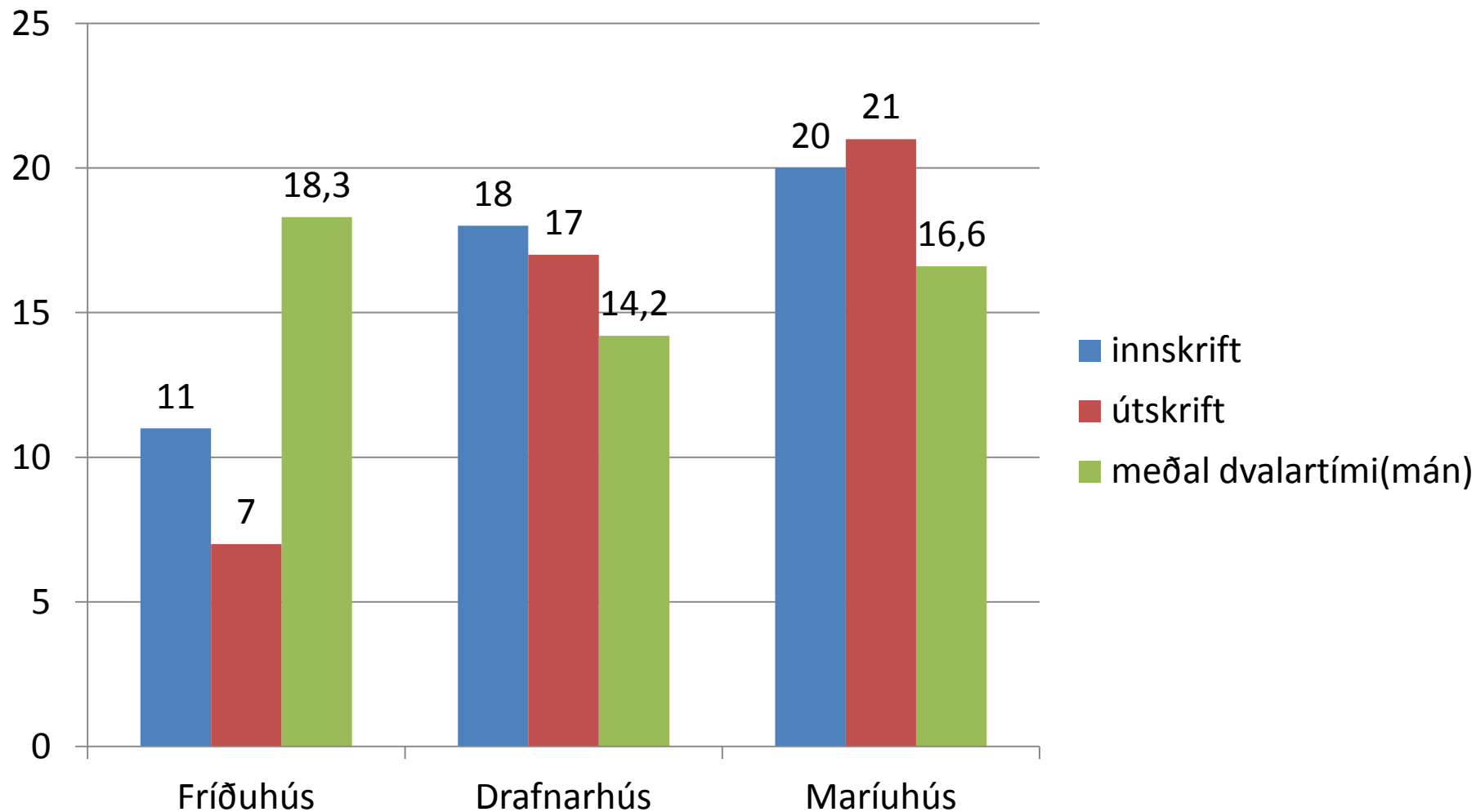
Fjöldi einstaklinga sem nýttu sér dagþjálfun hjá FAAS 2014



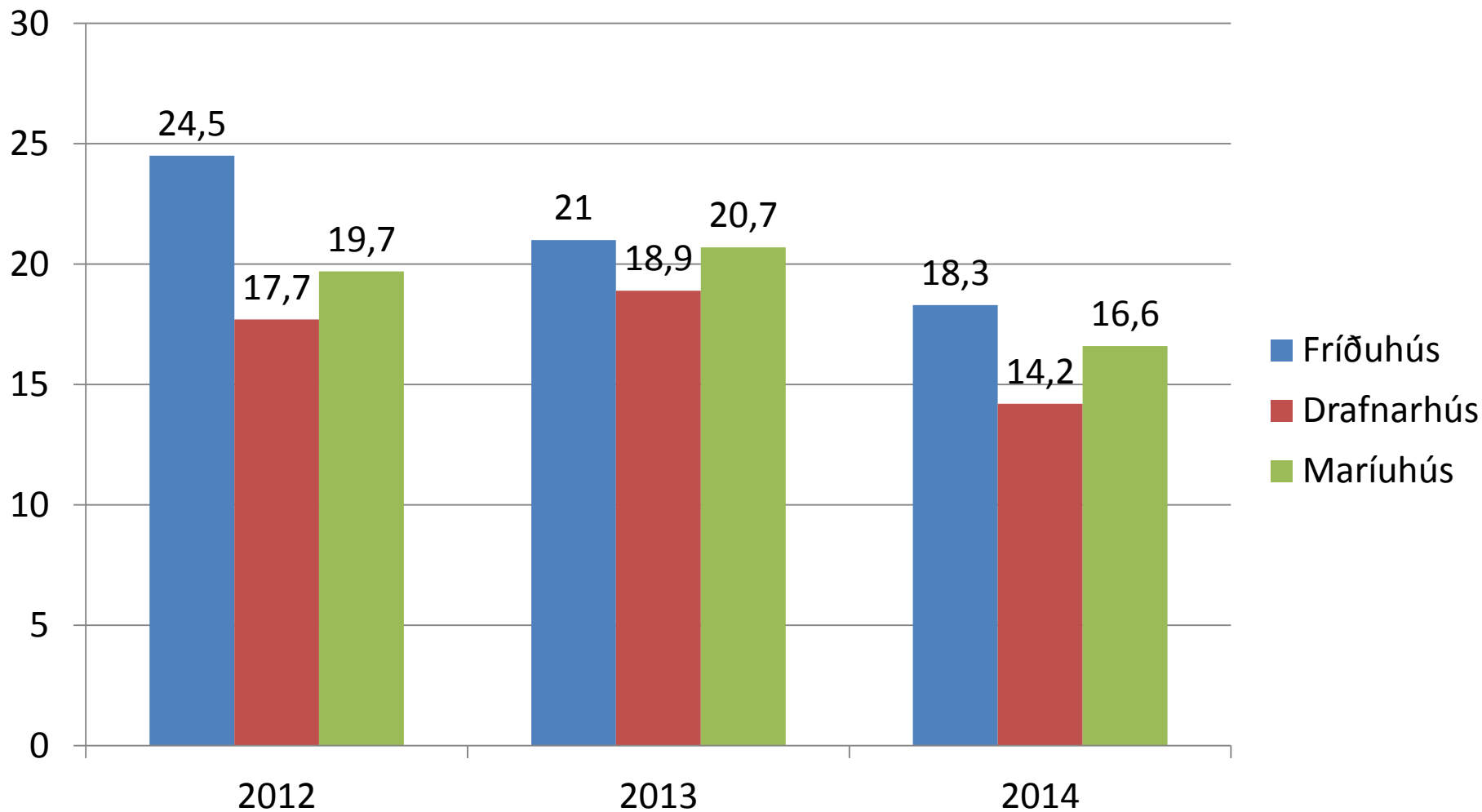
Fjöldi einstaklinga sem nýttu sér dagþjálfun hjá FAAS árin 2012, 2013 og 2014



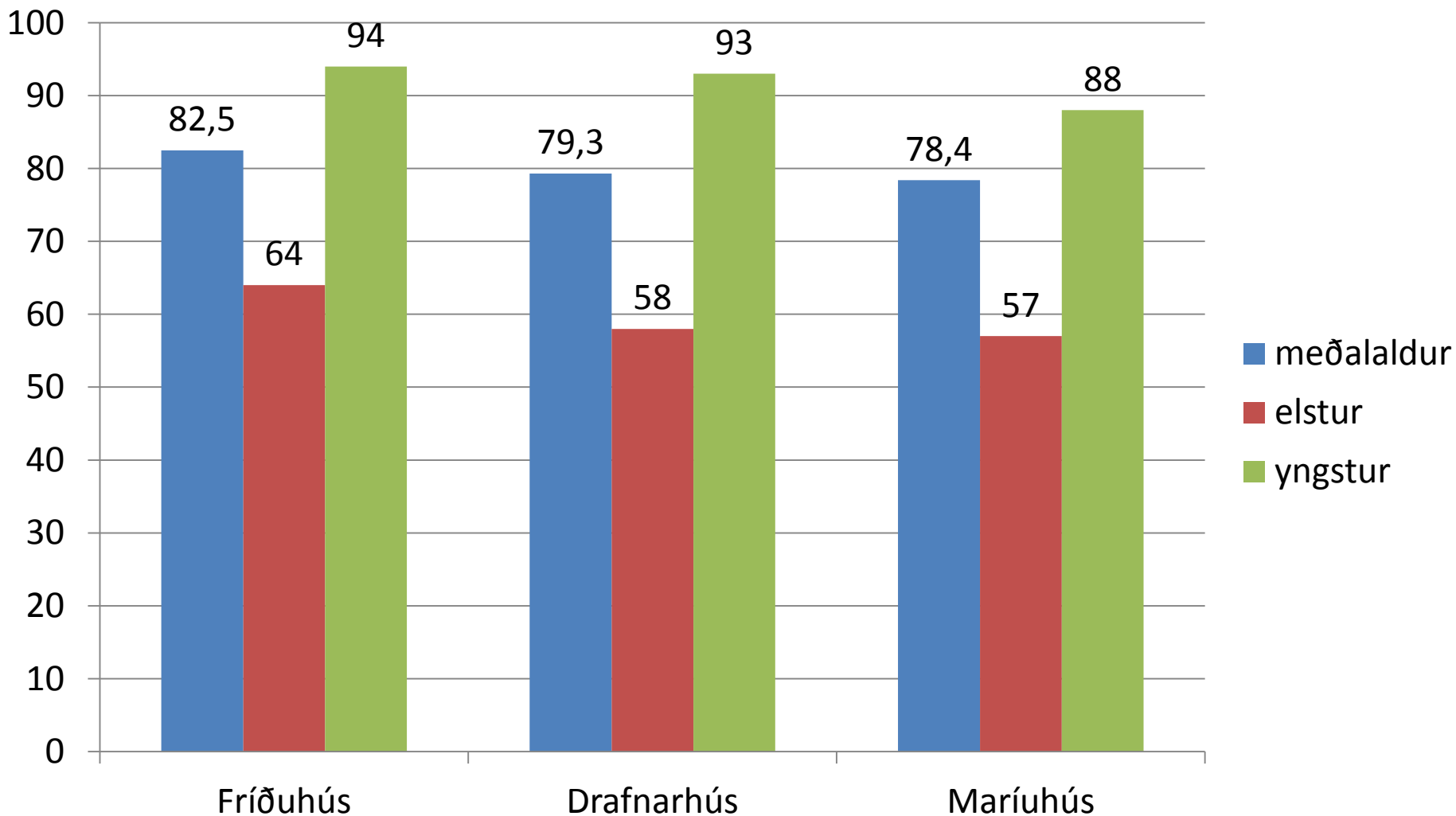
Innskrift, útskrift og meðal dvalartími útskrifaðra í húsunum 2014



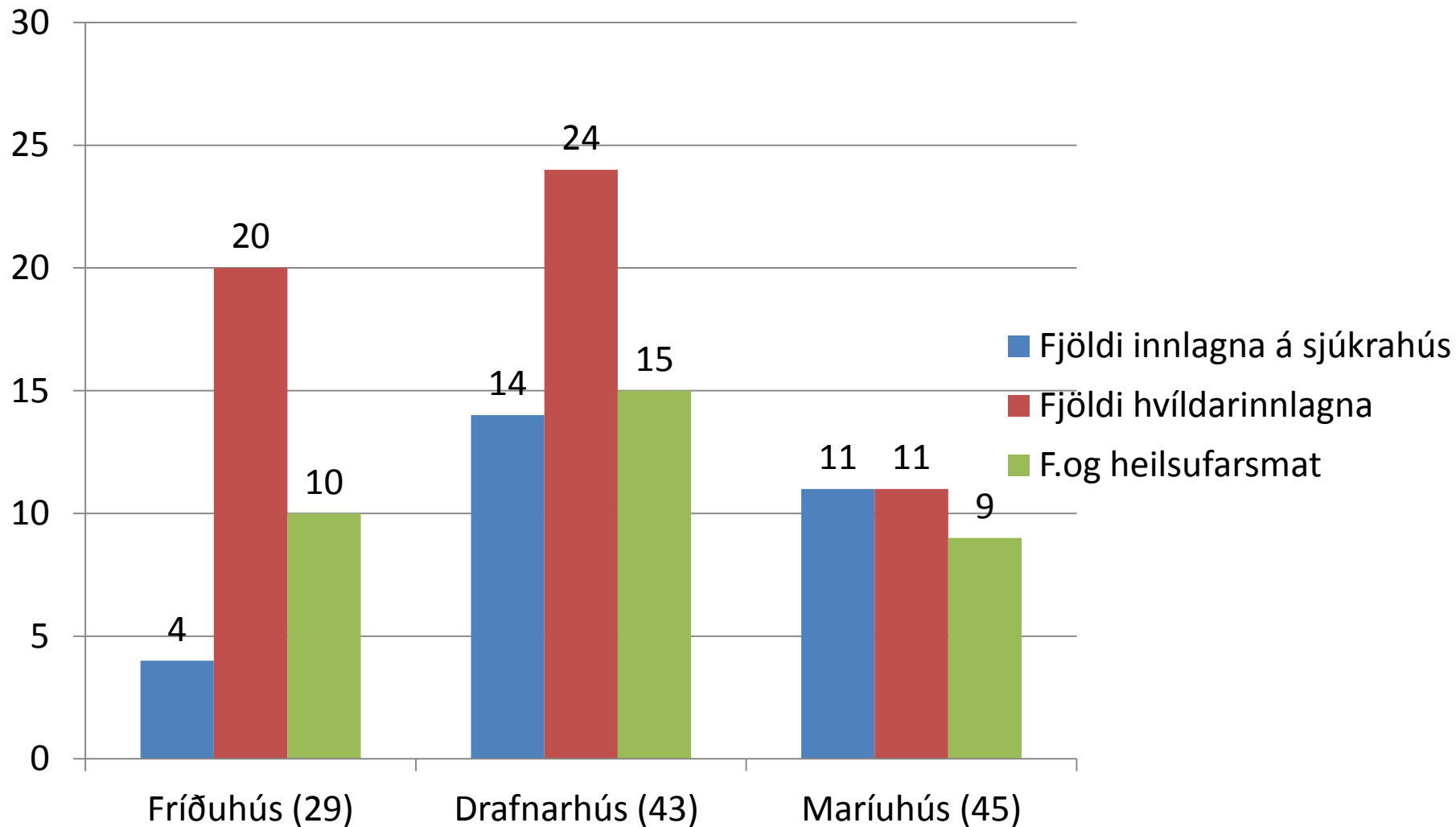
Meðal dvalartími útskrifaðra árin 2012, 2013 og 2014



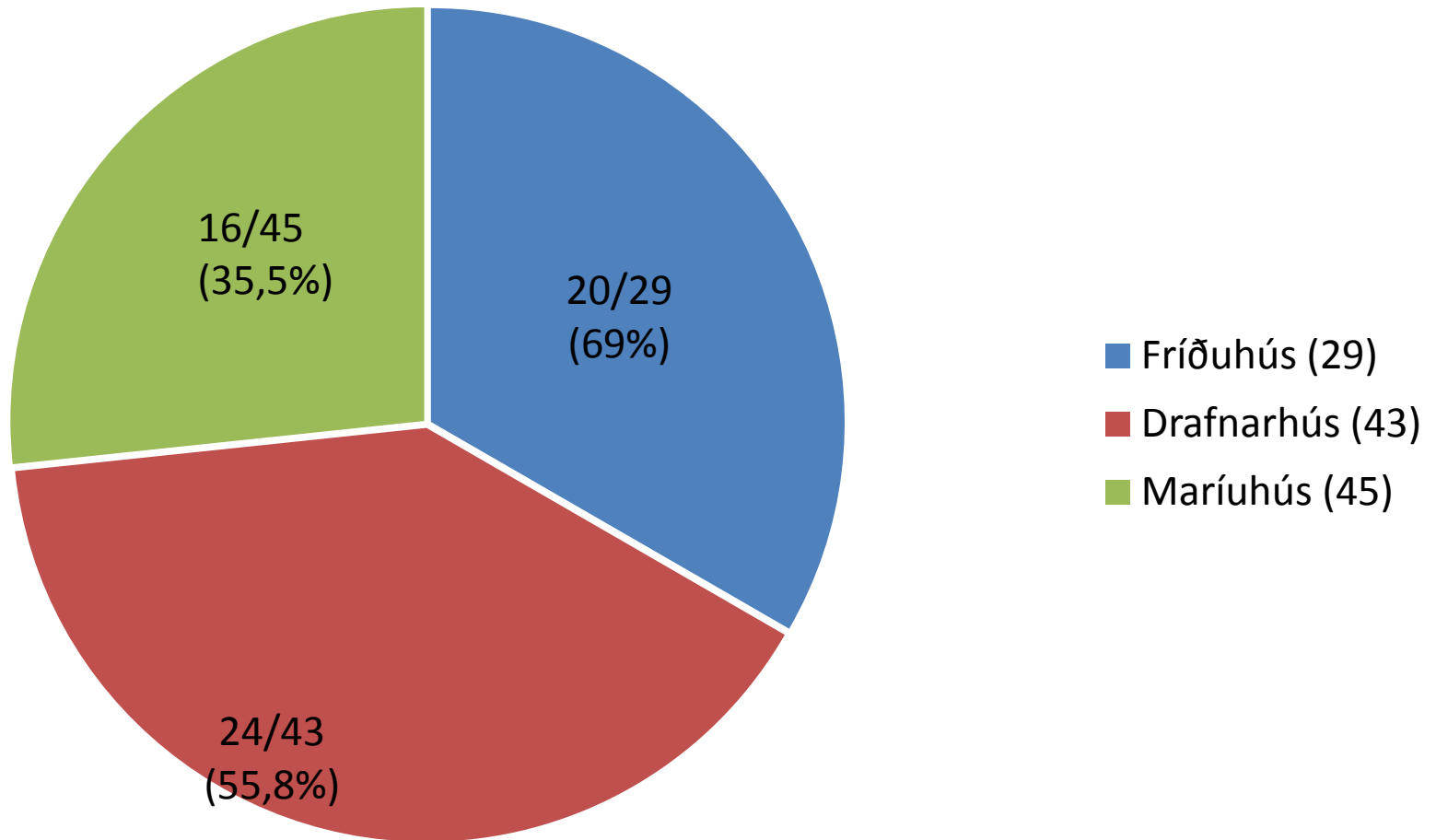
Meðalaldur þeirra sem nutu þjónustu húsanna 2014



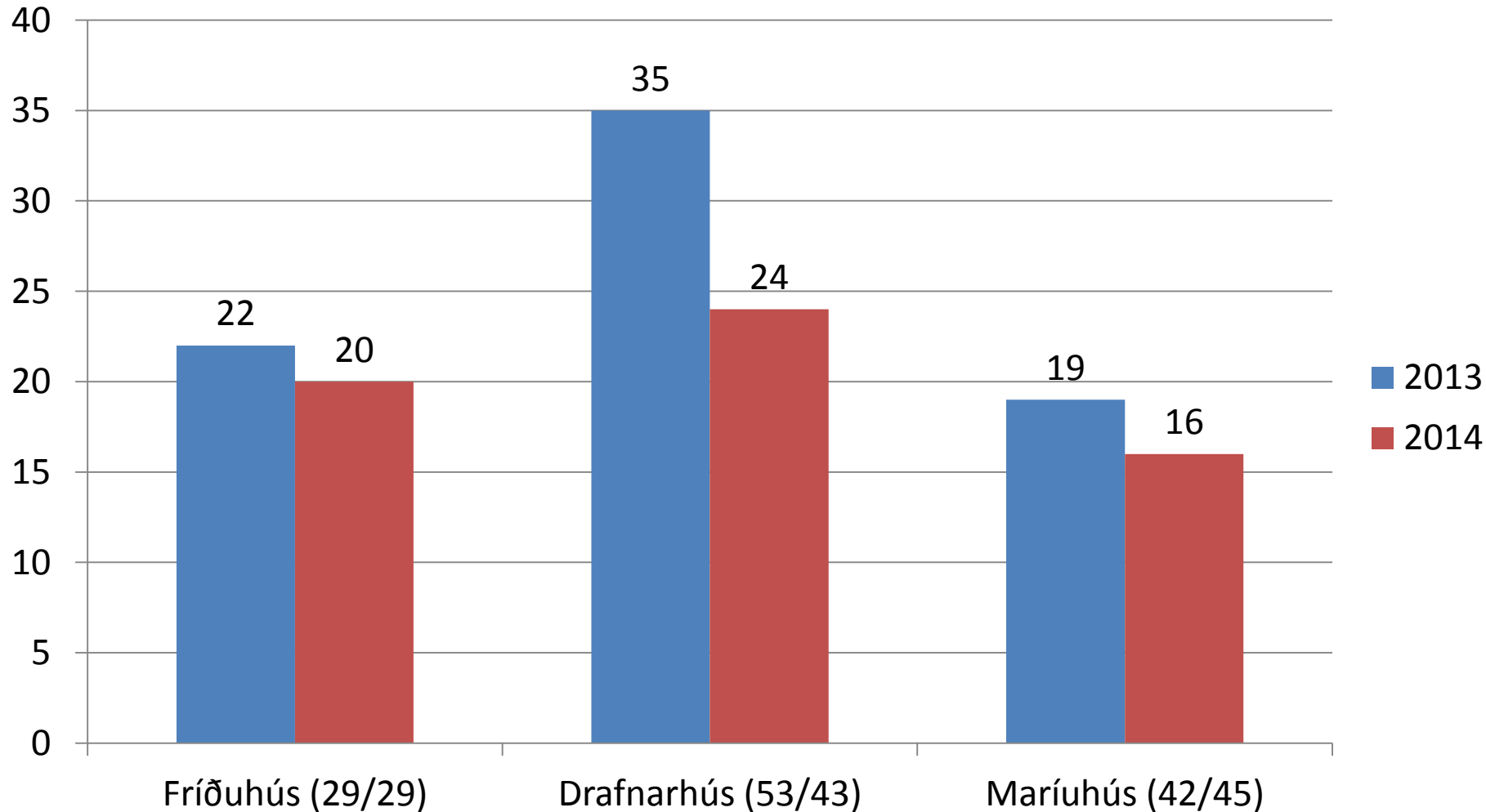
Innlagnir, færni- og heilsufarsmat 2014



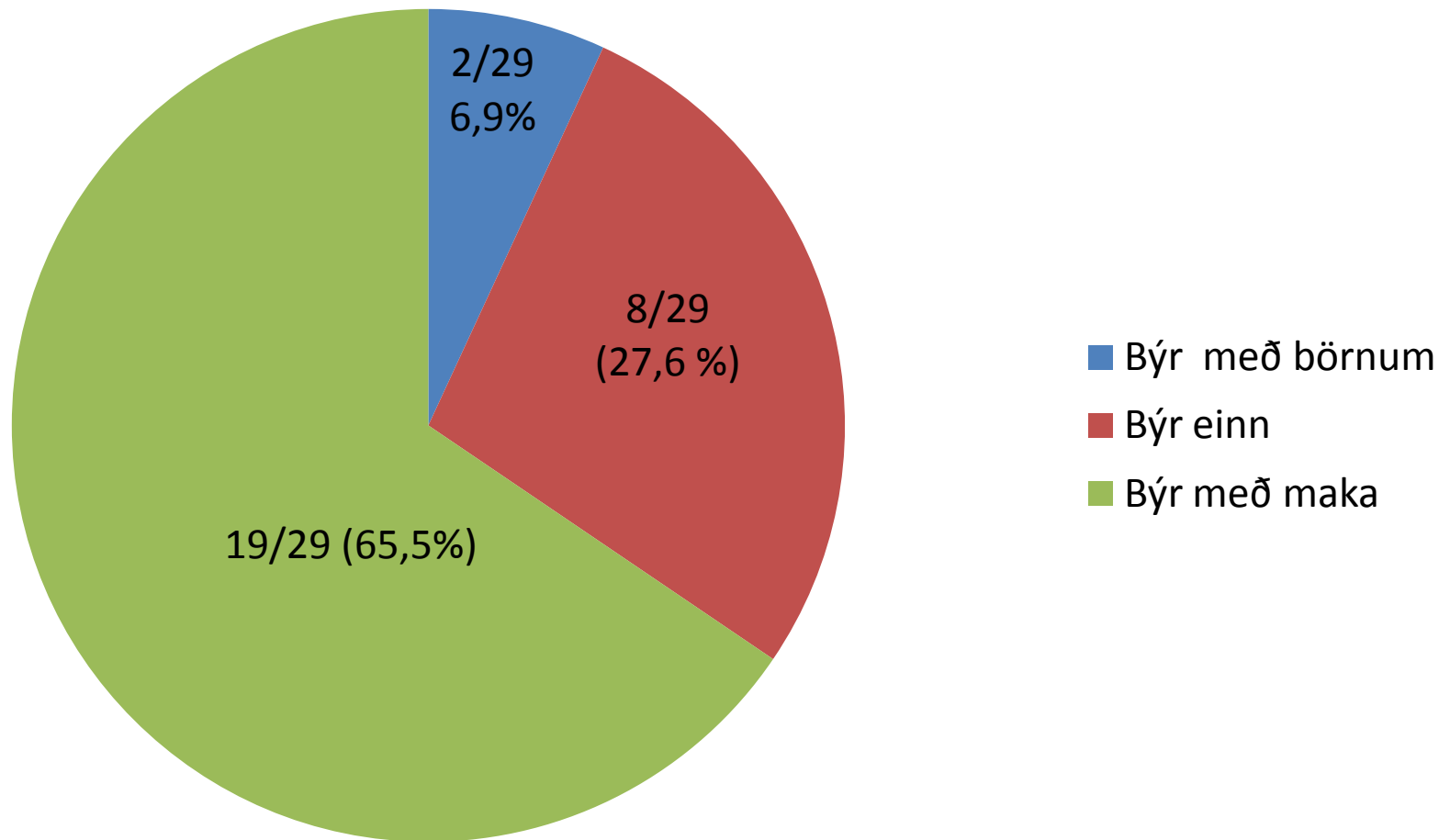
Fjöldi sem fékk heimaþjónustu 2014



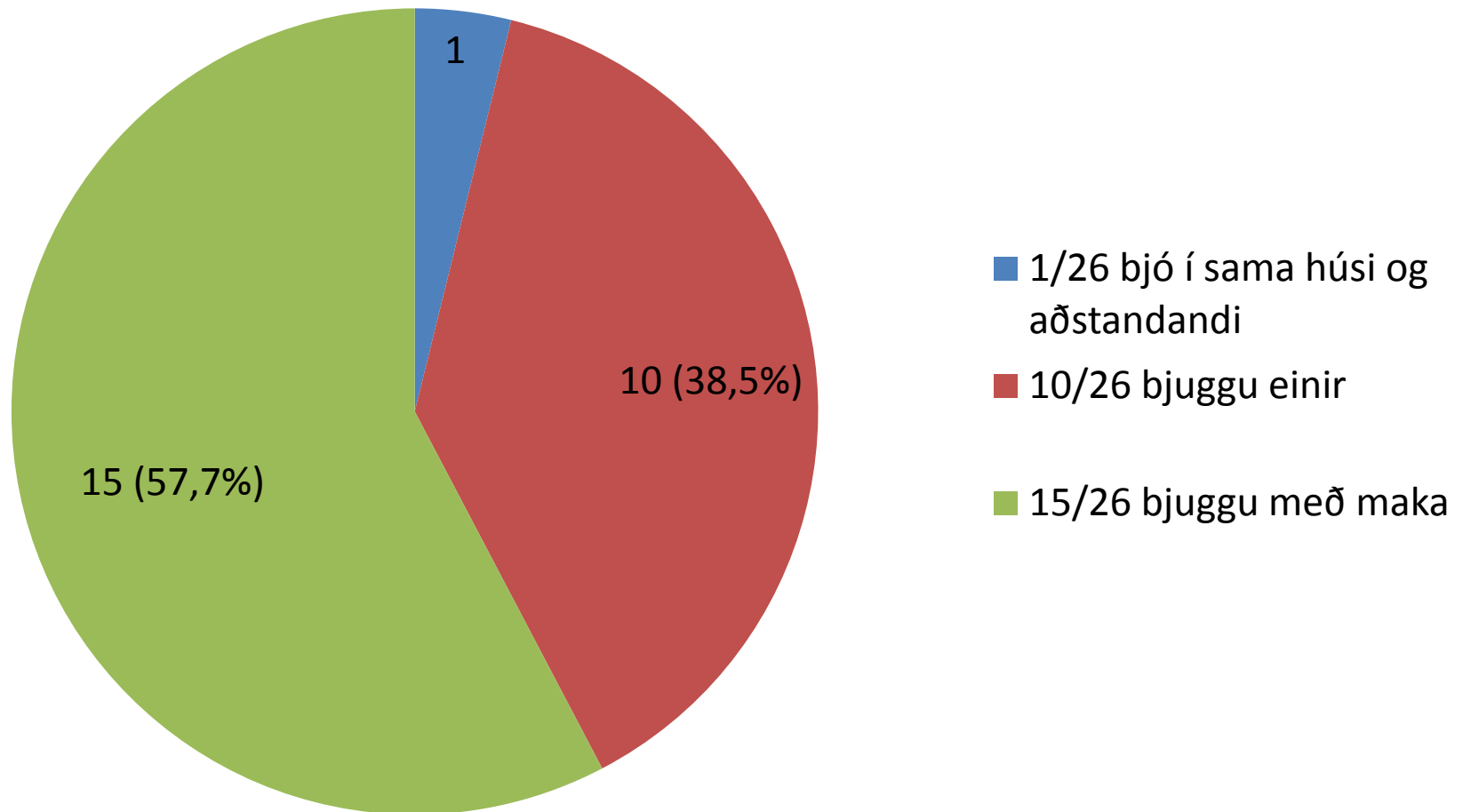
Fjöldi sem fékk heimaþjónustu 2013 og 2014



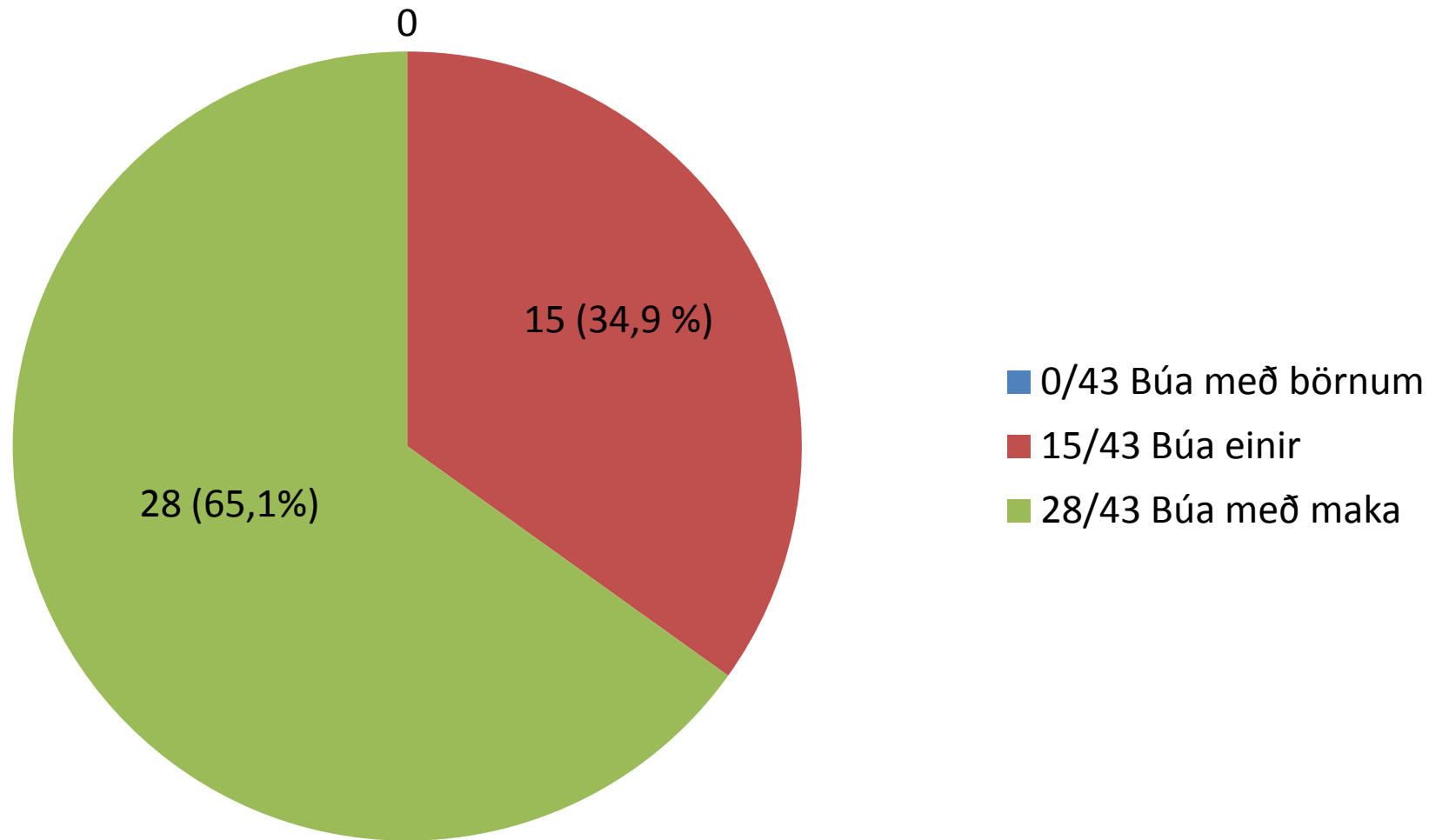
Búseta skjólstæðinga Fríðuhúss 2014



Búseta skjólstæðinga Fríðuhúss 2013

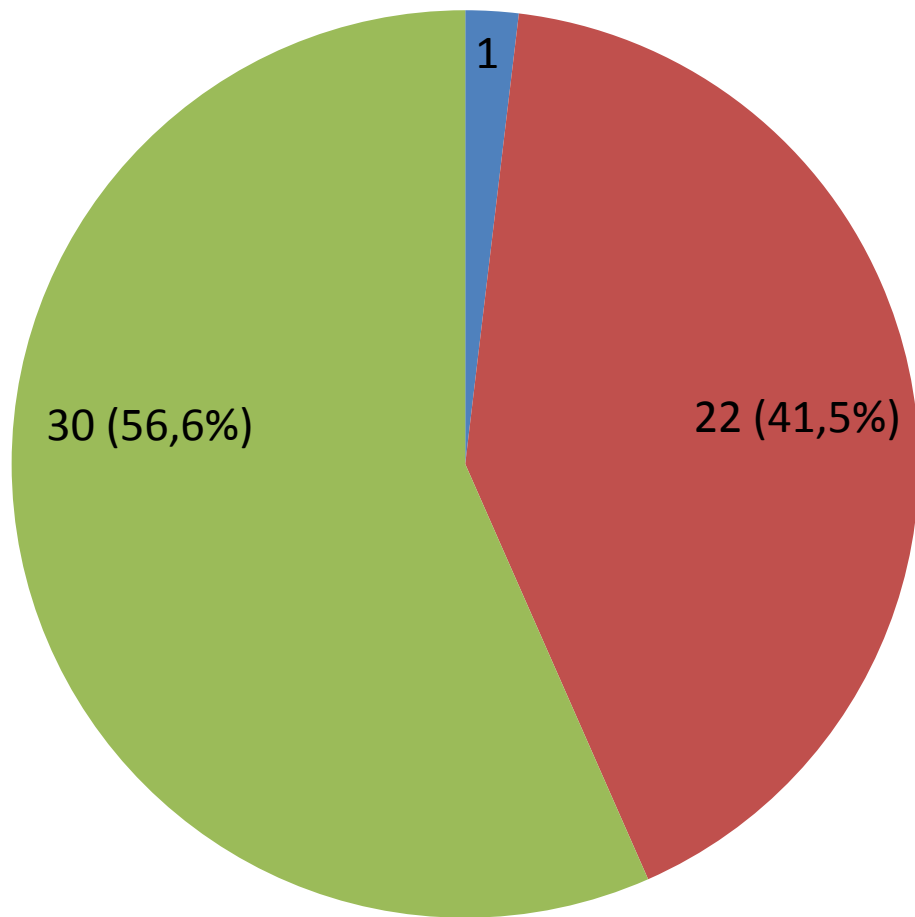


Búseta skjólstæðinga Drafnarhúss 2014



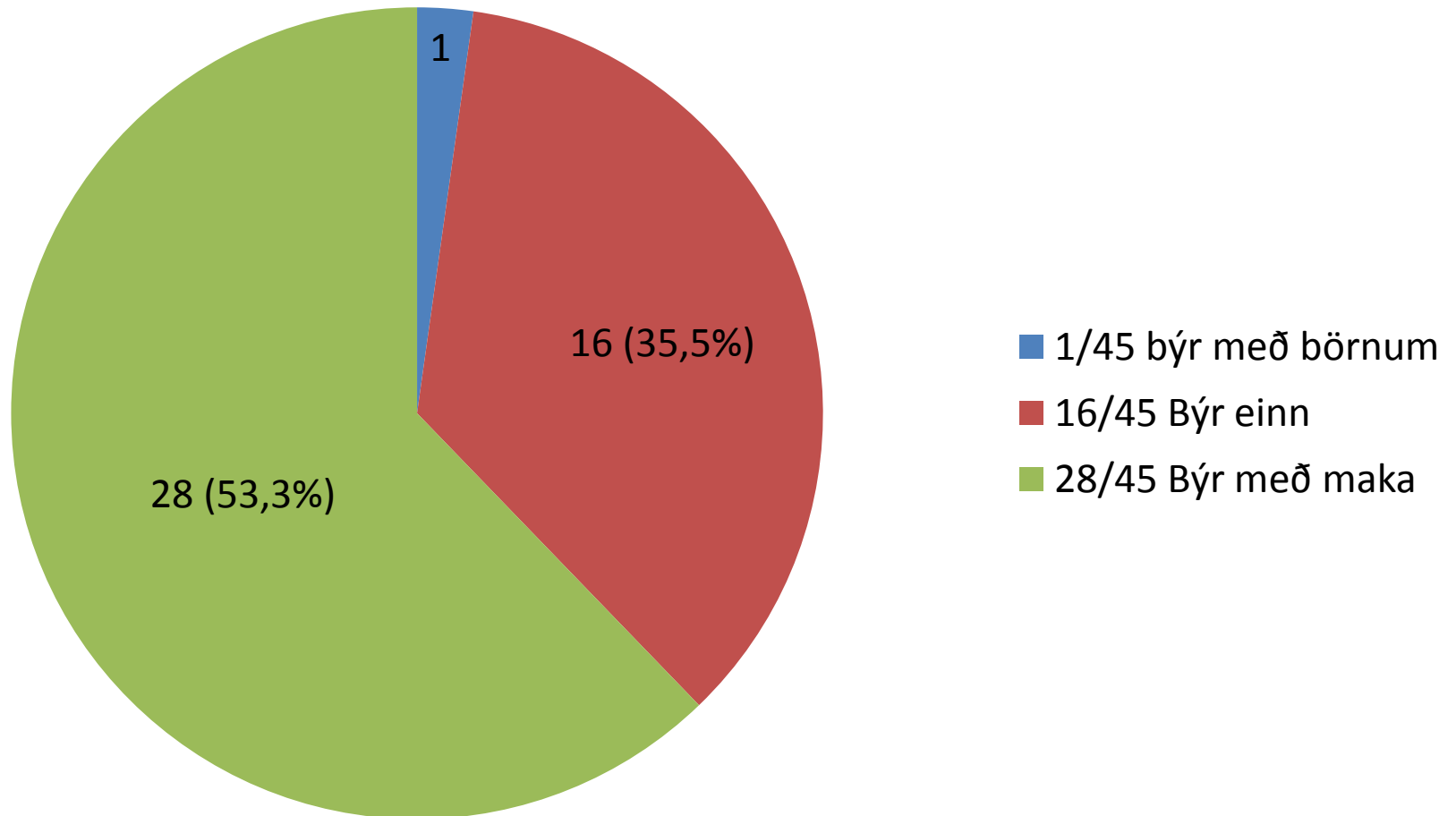
Búseta skjólstæðinga Drafnarhúss

2013



- 1/53 bjó í sama húsi og aðstandandi
- 22/53 bjuggu einir
- 30/53 bjuggu með maka

Búseta skjólstæðinga Maríuhúss 2014



Búseta skjólstæðinga Maríuhúss 2013

